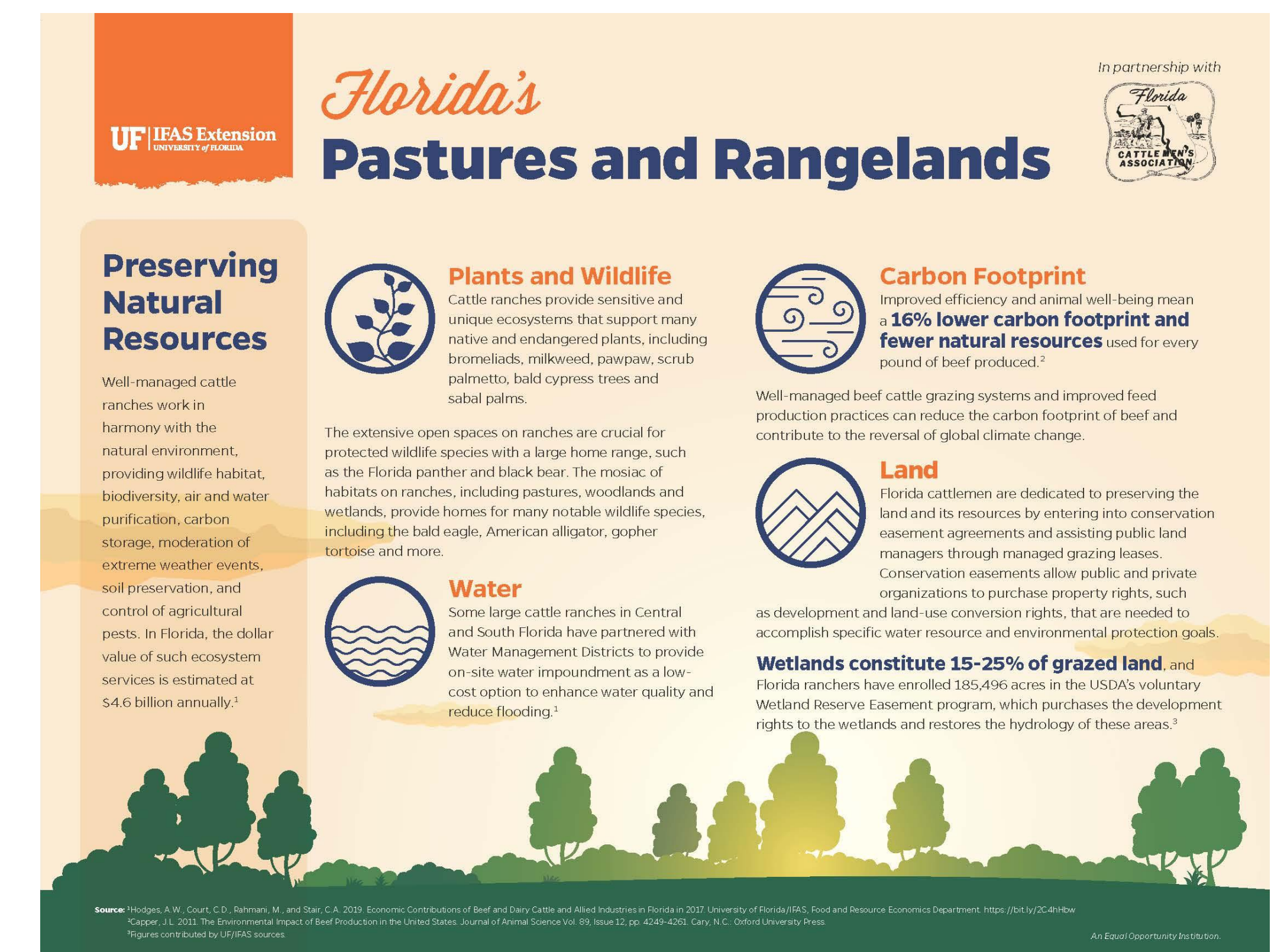
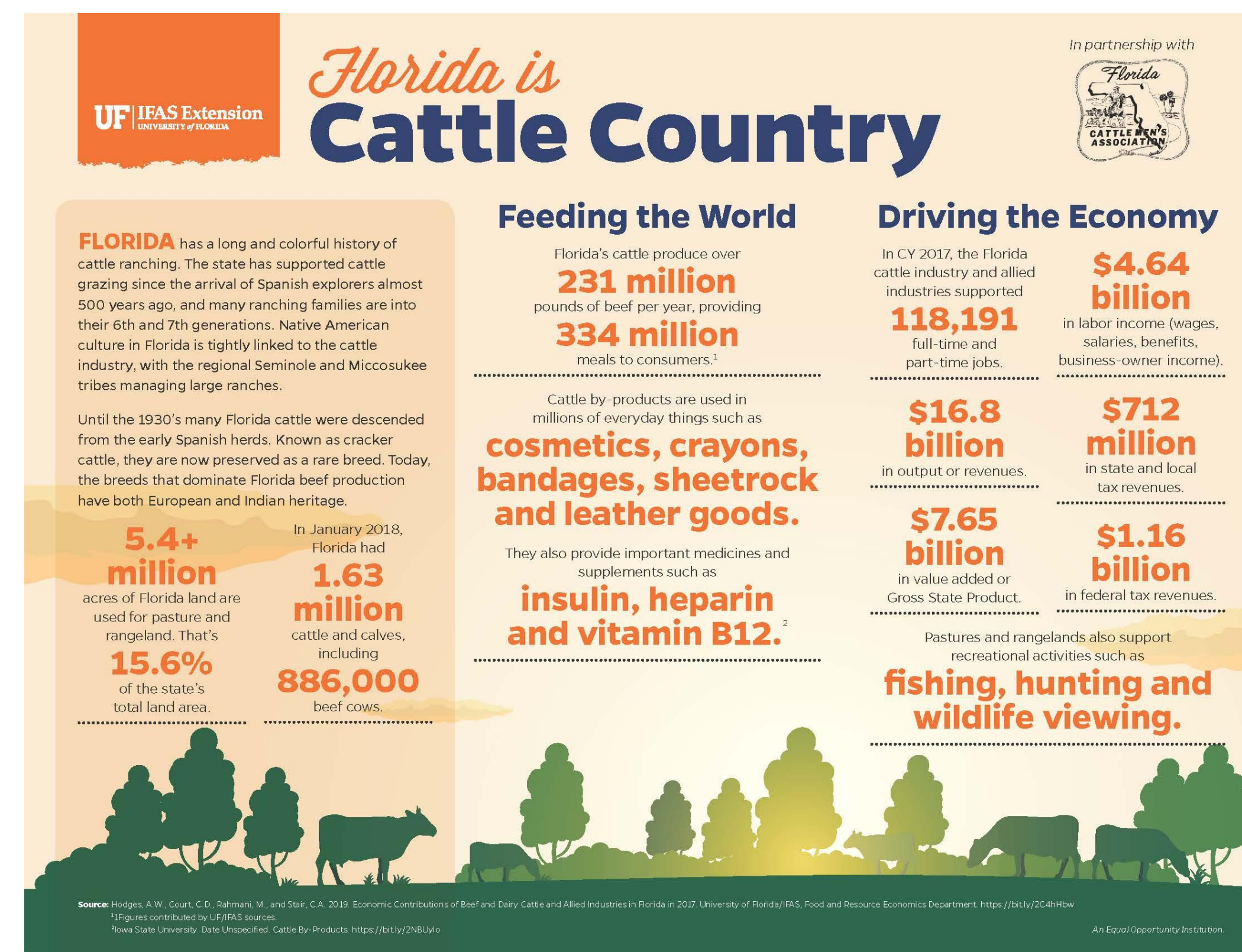
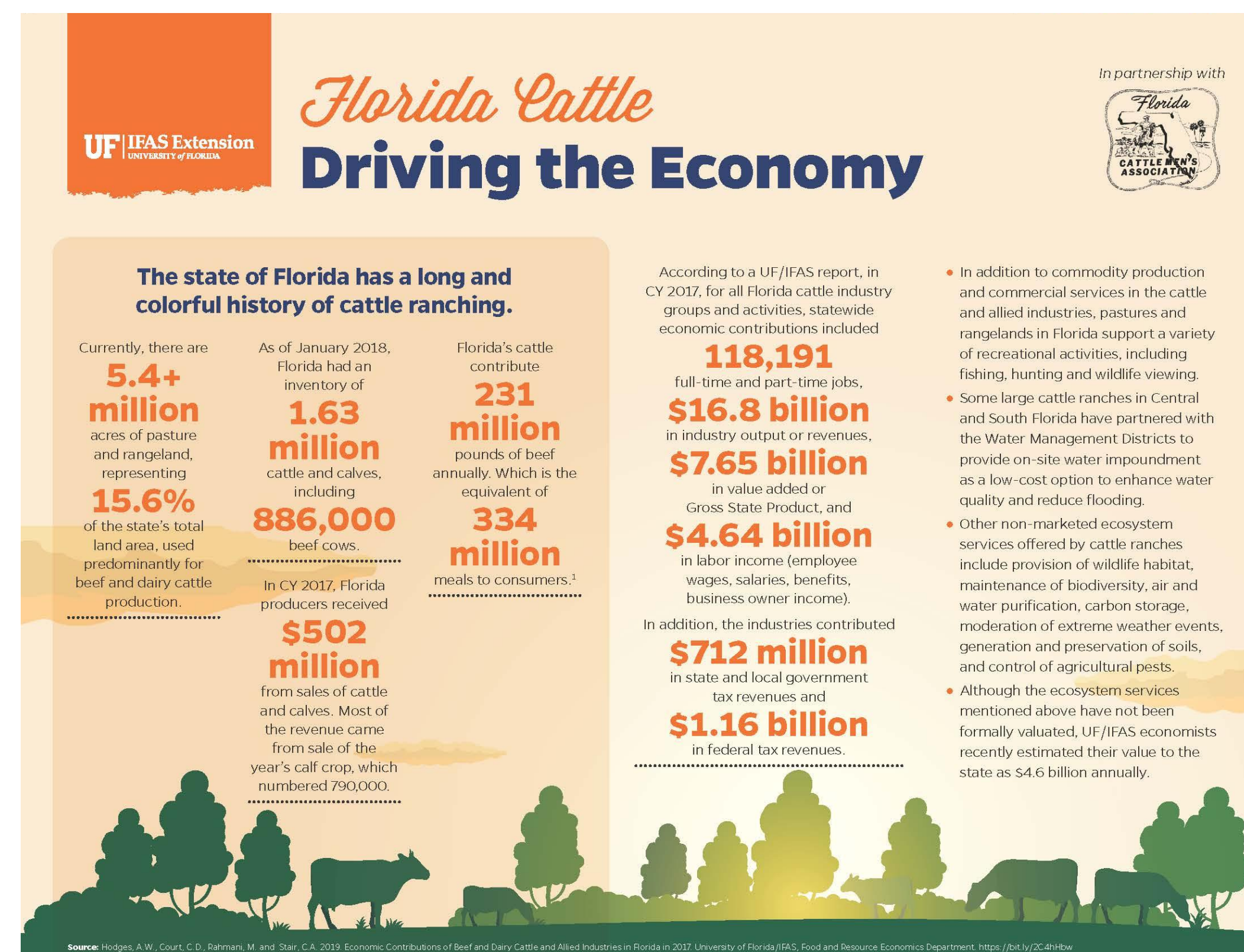


Statewide Interagency Collaboration Responding to the Needs of Stakeholders and Policy Makers

Butler, L.,* L. Bennett, E. Boughton, R. Boughton, S. Crawford, T. Davis, A. Hodges, C. Kirby, C. Prevatt, B. Stice, L. Wiggins

Through a collaborative effort of multiple UF/IFAS livestock agents and state specialists, the Natural Resource Conservation Service (NRCS), Florida Fish and Wildlife Conservation Commission and the Florida Cattlemen's Association a series of infographics were designed that highlight the positive impacts ranching makes to the environment, how it influences the economy, how ranchers utilize best management practices and how they play a part in a safe food supply.



These infographics have been distributed amongst national policy influencers (128 Senators and Congressmen), state policy makers (160 Senators and Florida Representatives), consumers and ranchers, and on many avenues of social media. It is impossible to gage how these infographics have truly impacted the agricultural industry.

Through this effort consumers and policy makers gain a better understanding of the progressive food system, an appreciation for the efforts made by producers, and a clarification of misinformation about the health of our food supply. These infographics foster supportive policy regarding research, national and statewide conservation funding, and ranching advocacy.

L.Butler@ufl.edu